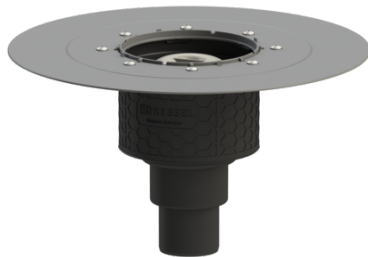


Ecoguss drain body glued flange, DN 50, Vertical outlet



Article information

Item no.: 48658
GTIN: 4026092033333
Price group: 40

Advantages

- High-tech Ecoguss composite material
- Highest fire protection standards
- Scientifically confirmed sound protection effect

Description

The Ecoguss base body is used in combination with an attachment piece for point drainage, and is equipped with a removable odor trap, and a protective cover for the construction period. The recyclable composite material Ecoguss meets the highest noise protection requirements, is temperature-resistant, resistant to aggressive media, and has a permanently corrosion-free surface. It is also briefly flammable from 100 to 400 degrees Celsius. The glued flange with bolts and screws made of stainless steel is used for the clamping or welding of bitumen and polymer bitumen sheets as well as for polymer and elastomer sealing sheets. Only the sealing sheets tested by the manufacturer may be used for watertight seals. The outlet socket is suitable for connection to SML cast iron pipes. Separate equipotential bonding is not necessary.

Variant

| | |
|--|--|
| System: | 125 |
| Waterproofing layer on the drain body: | Adhesive flange (suitable for moisture barriers) |
| Sealing water height: | 50 mm |

General characteristics

| | |
|--------------------------|---------------------------|
| Standard: | EN 1253-1 |
| Nominal size (DN): | 50 |
| Outer diameter (OD): | 58 mm |
| Inlet max. scoring (DN): | Z-19.53-2414,Z-19.17-1719 |

Dimensions

| | |
|----------------------|---------|
| Net weight: | 1,31 kg |
| Gross weight: | 1,9 kg |
| Diameter: | 348 mm |
| Height: | 205 mm |
| Packaging dimension: | length |
| Packaging dimension: | width |
| Packaging dimension: | height |

| | |
|-------------------------|----------|
| Tank/drain body | |
| Number of outlets: | 1 |
| Material of drain body: | Ecoguss |
| System: | vertical |

| | |
|-------------------|----------|
| Coverage features | |
| Odour trap: | included |